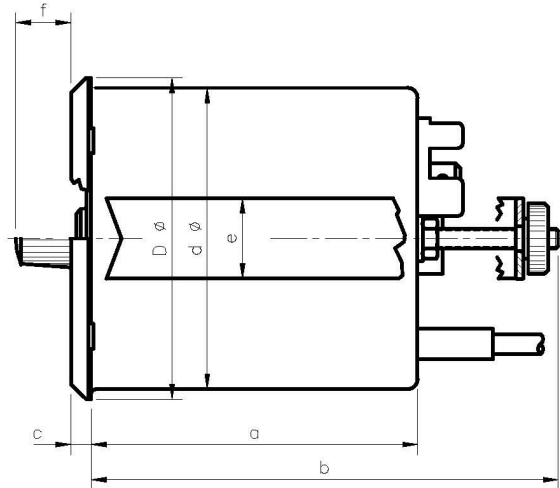


04.11 Telethermostat in Steel-Case For Front Panel Mounting with U-Clamp



Type	a	b	c	d	e	f	D
3060.1 KB	65	85	4	60	16	11	64
3080.1 KB	65	85	5	80	16	11	84
3100.1 KB	65	85	8	100	16	12	105

Case:	Steel sheet corrosion protected
Mounting:	Front panel mounting with u-clamp
Bracket:	Steel sheet corrosion protected
Window:	Glass, clear
Measuring system:	Double bourdon spring system, with bimetal compensation
Scale:	White - with black prints
Scale length:	approx. 270 [°]
Graduation:	1°, 2°, 5°, 10° depending on range
Range:	Between -80 ... +380°C
Accuracy:	± 2% at 23°C ambient temperature
Pointer:	Measuring pointer black - set pointer red
Contact:	1 single pole contact microswitch, adjustable over hole range frontside with PVC-knop
Switching capacity:	5 A 250 V AC 40-60 Hz, non inductive
Switching differential:	approx. +2% of range "switching at falling temperature" approx. -2% of range "switching at rising temperature"
Electrical connection:	AMP connector, size 6.3 acc. to EN 60730
Protection:	Case IP 53, terminals IP 00 acc. to DIN40 050
Approvals:	CE acc. to EN 60730-1 u. 60730-2-9
QMS:	DIN EN ISO 9001
Options:	- IP 55 by using a protection cap for the terminals
(on request)	- contact setting with screwdriver or special key - factory setted fixed set point - factory setted fixed maximum set stop

Important Advise:

Please use RC units to protect contacts from high voltage peaks.
Inductive loads allways has to be switched by suitable relais.